



WIDEimage^{NET}
with **WIDEtwain**

- Color & monochrome scanning
- Scan to file
- View and Edit
- Scan to net (including internet)
- Scan to print
- TWAIN driver included

WIDEimage^{NET} with **WIDEtwain**

Designed Exclusively for Context Scanners.

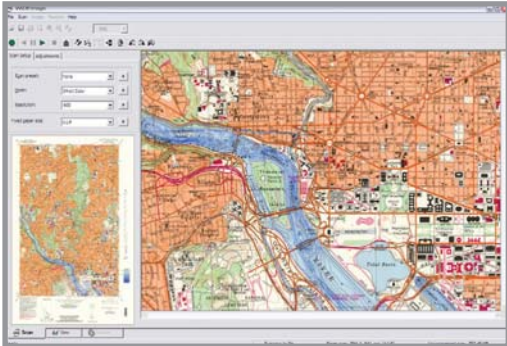
WIDEimage^{NET} is full-featured scanning software for Context wide format scanners. The application is designed to unlock the full potential of your Context scanner as only Context software can. With the capabilities to scan, print, view, and edit images with ease, **WIDEimage** supports a wide range of file formats including PDF, JPG, and TIFF. Also installed with the **WIDEimage** software is a TWAIN driver to use with your favorite archiving or imaging software. **WIDEtwain** has all the same

[SCANNING SOFTWARE]

scanning functions as **WIDEimage** and imports images into any TWAIN compliant software.

- > **Full support for Context technologies**
- > **Ultra-fast scan-to-file**
- > **Batch scanning and conversion**
- > **Powerful editing tools**
- > **Fast, robust viewer**
- > **Intelligent monochrome clean-up**
- > **Scan to PDF**

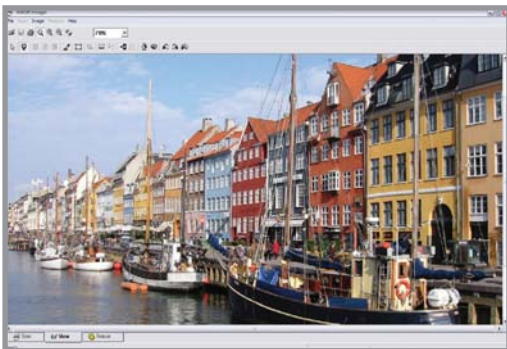
WIDEimage^{NET} with WIDetwain



SCAN

Scan and prescan interactively. The split screen with Overview and Detail windows lets you move around the image, and try out different settings while you zoom in and view the effects on-line.

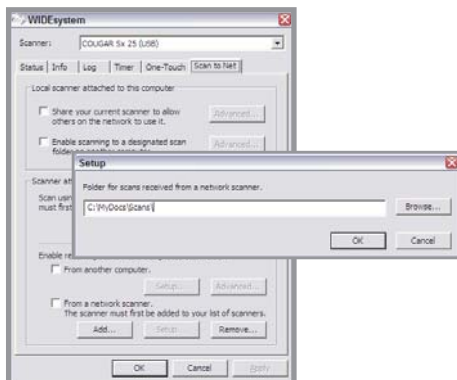
- > Full scanner control: All Contex technologies fully supported
- > Capture images in sRGB or NTSC color space
- > Full color, 8-bit color, 8-bit grayscale, and black/white scanning
- > Automatic rotation, deskew, invert during scanning
- > Batch scanning with fast paper load, and option.



VIEW + EDIT

The ultra-fast viewer offers all the tools you need for post scanning tasks. You can work with the image just scanned or load one you scanned previously. The viewer and editor features:

- > Scan-to-File with full Contex scanner control
- > Save files as PDF, JPG, TIFF, and many others
- > Powerful viewer can open and edit almost any image type
- > ICC color management support
- > Rotation, cropping, even feature extraction built into editor



NETWORK

With the WIDEsysteem^{NET} scanner driver and control software installed, Contex scanners can be shared on the network with other users of WIDEimage^{NET} software. A simple configuration of WIDEsysteem^{NET} and your scanner can be selected by others on the network as if it is locally connected.

- > Scan-to-Net: scan across the network to another PC
- > Use WIDEimage^{NET} with a scanner connected to a different PC
- > Scanner, PC, and Printer can all be located separately
- > Scanning across LAN or Internet
- > Designate a shared folder in WIDEsysteem^{NET} for network scanning



IMPORT

For some imaging professionals, powerful scan-to-file software is not necessary. The only need is for a fast, simple, powerful TWAIN import for their specialized software. WIDetwain provides the ability to import images quickly and correctly into any TWAIN-compliant imaging software. For professionals in archiving and graphic imaging, using either document management or image editing software, WIDetwain is the perfect import tool for capturing wide format images, and like all Contex software, it is designed to get the best performance possible from all Contex scanners. WIDetwain is automatically installed with WIDEimage^{NET} and has the same scan-to-net capabilities as well.

Contex publication "WIDEimage^{NET}" 2006 © Contex A/S. JETImage, WIDEimage, WIDEsysteem and Contex are trademarks of Contex A/S. Microsoft and Windows are registered trademarks of Microsoft Corporation in the USA, and other countries. All other brand and product names are trademarks or registered trademarks of their respective companies. The information contained in this document is subject to change without notice. Contex makes no warranty of any kind with respect to this information. Contex specifically disclaims the implied warranty of merchantability and fitness for a particular purpose. Contex shall not be liable for any direct, indirect, incidental, consequential, or other damage alleged in connection with the furnishing of this information.

HEAD OFFICE: Contex A/S
2 Svanevang
DK-3450 Allerød · Denmark
Ph: +45 4814 1122 · F: +45 4814 0122

USA: Contex Scanning Technology
365 Herndon Parkway
Herndon, VA 20170 · USA
Ph: +1 (703) 925-2316 · F: +1 (703) 707-0825

info@contex.com
www.contex.com

WHEN IMAGING MATTERS