

photo **PRINT6**

MORE THAN JUST A RIP



## MORE THAN JUST A RIP

As technology moves forward, SAI International brings you a new era in color management. Progressing along with the large format industry, PhotoPRINT™ 6 is designed to help your productivity ascend to new heights—while maintaining SAI's signature ease-of-use interface.



- **PRINT WIZARD**

The new Print Wizard adds a simple question and answer approach to your workflow. It guides a user from adding a job, choosing a printer, setting basic job parameters and finally to print. Even color correction has been made simple by linking to our new Variations feature included in the Print Wizard.



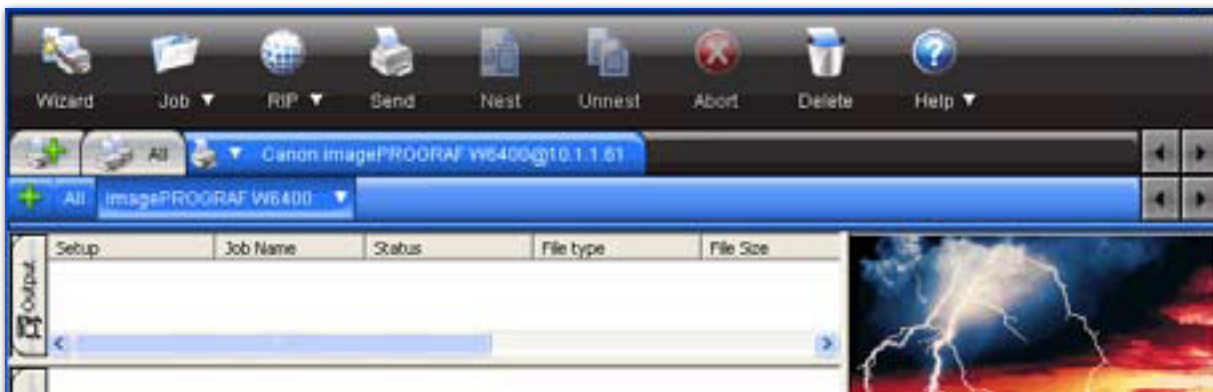
Print Wizard

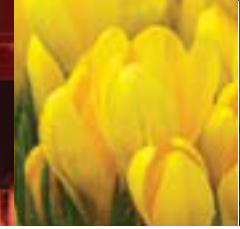


Variations

- **VISTA SUPPORT**

Staying up to date with leading technology, PhotoPRINT 6 is fully compatible with Windows Vista. The user interface has been redesigned following Microsoft's guidelines for Vista applications.





## • N-COLOR SUPPORT

PhotoPRINT 6 begins a new era in color management by supporting up to 16 true color channels\*. ICC profiles can now be created for RGB or CMYK printers with the new, simplified, user-friendly Color Profiler which supports the new version 4 profiles.

(\*Driver must also support n-color)

	Cyan	100%
	Magenta	100%
	Yellow	100%
	Black	100%
	Red	100%
	Green	100%
	Blue	100%

## • DUAL ROLL SUPPORT

The new dual roll option allows you to define two media sizes to be used simultaneously even on printers that technically don't support two rolls. If jobs are nested, the WYSIWYG layout control allows you to easily define ICC Profiles, among other things, for individual jobs per roll.



Dual Roll

## • READY TO PRINT FROM CREATIVE APPLICATION



With our new dynamic PPDs, you are able to print from any application using PhotoPRINT 6 presets or ICC profiles. After you create new presets or ICC profiles, these can be easily added to the desktop printer settings with a single click in your Setup Properties.

## PHOTOPRINT 6 PRODUCTS :

### PhotoPRINT SERVER-PRO

The complete client-server RIP solution package includes extended capabilities and cost-saving features. Additional features include an EDITOR station for layout and design and Color Profiler for output profile creation and editing.

### PhotoPRINT SERVER

The client-server RIP solution for networks and large production environments, featuring productivity tools such as Job Priority, Page Nesting and Job Nesting. These tools will make workflow to multiple printers generate accurate and consistent results in any volume.

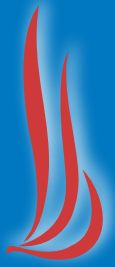
### PhotoPRINT DX

An unparalleled layout package with design capabilities for text, shapes and effects, combined with the versatility to RIP and print to two devices simultaneously. The design and output of Print & Cut decals is straightforward and accurate with this integrated solution.

### PhotoPRINT SE

A RIP solution with the fundamentals for the single-workstation environment. Send jobs to RIP and print directly from popular design applications such as Adobe Photoshop® and Illustrator®, QuarkXPress®, CorelDRAW®, and CAD/AEC/GIS engineering solutions.





TOP 30 FEATURES	PhotoPRINT SERVER-PRO	PhotoPRINT SERVER	PhotoPRINT DX	PhotoPRINT SE
<b>CLIENT</b>				
Print Jobs from any Application	Improved	Improved		Improved
Receive Jobs from a Network Environment	✓	✓		
<b>JOB CONTROL</b>				
Dual Roll Printing	New	New		
Job Filtering	New	New	New	
Job Estimation	New	New		
TWAIN (scan directly to queue)	New	New	New	
Repeat Job	New	New	New	Optional
Print Wizard	New	New	New	New
Job Nesting: Manual & Automatic	Improved	Improved		
Manual Editing of Nested Jobs	Improved	Improved		
Presets: Import, Save, Apply & Export	Improved	Improved	Improved	Improved
<b>RIP</b>				
Adobe® PostScript® 3	✓	✓	✓	✓
Contour Cut to Hybrid Printer/Cutter	✓	✓	✓	✓
Contour Cut to Virtual Hybrid Printer/Cutter	✓	✓	✓	
Simultaneous Output Threads	3	3	2	1
CMYK & Spot Color Separations	✓	✓	✓	
<b>COLOR MANAGEMENT</b>				
CMYK +(RGB, RB, OG)	Improved	Improved	Improved	Improved
ICC Profile Editing	Improved	Improved	Improved	Improved
ICC Profile Creation	✓			
Utilize 3rd Party ICC Output Profiles	✓	✓	✓	✓
Object Color Control	Improved	Improved		
Global Color Mapping with Pantone® Library	✓	✓	✓	✓
Custom Color Mapping	Improved	Improved		
Printer Simulation	✓	✓		
<b>DESIGN</b>				
Text Creation & Editing	✓		✓	
Make Transparent Bitmap	New		New	
Contour Cut Creation & Editing	✓		✓	
Auto Serialization (Variable Data)	✓		Optional	
Templates: Apply, Create, & Edit	✓		Optional	

For more information and to request a Demonstration, please contact:

Powered by



**invención digital**

**Av. San Antonio #100-F, Col. Napoles  
C.P. 03810, México D.F.**

**Tels.: 5682 7726 / 5543 7676**

PhotoPRINT is a registered trademark of SAI; Adobe and PostScript are registered trademarks of Adobe Systems, Inc.; Pantone and other Pantone, Inc. trademarks are the property of Pantone, Inc.; ColorLogic is a registered trademark of ColorLogic GmbH. All other trademarks are the property of their respective owners.  
©2007 SAI. All Rights Reserved.  
Specifications subject to change without notice.



**SA International** International Plaza Two, Suite 625 Philadelphia, PA 19113-1518 USA  
Toll Free: 800-229-9068 Tel: 610-521-6300 Fax: 610-521-0111  
Email: info@SAintl.biz Website: www.SAintl.biz

**SAI Europe** Minervastraat 14 bis B-1930 Zaventem, Belgium Tel: +32-2-725-5295 Fax: +32-2-725-2809  
Email: info@SAintl.biz